

Lagnakeil

a warm welcome...in any language



Why not shake off the burdens of everyday life and experience an ancient and beautiful land of mountains, lochs and islands from the comfort of a Lagnakeil Lodge.

Nestled throughout seven acres of wooded hillside in the peace and calm of Lerags Glen our well appointed Lodges are a haven of tranquillity guaranteed to revitalise the most world-weary guest

At Lagnakeil you'll find a warm Highland welcome from resident owners Colin and Jo Mossman.

Lagnakeil's location is truly unrivalled allowing you to take full advantage of all that the westcoast Highlands of Scotland has to offer, ensuring you have a memorable holiday. An ideal retreat to return to year after year



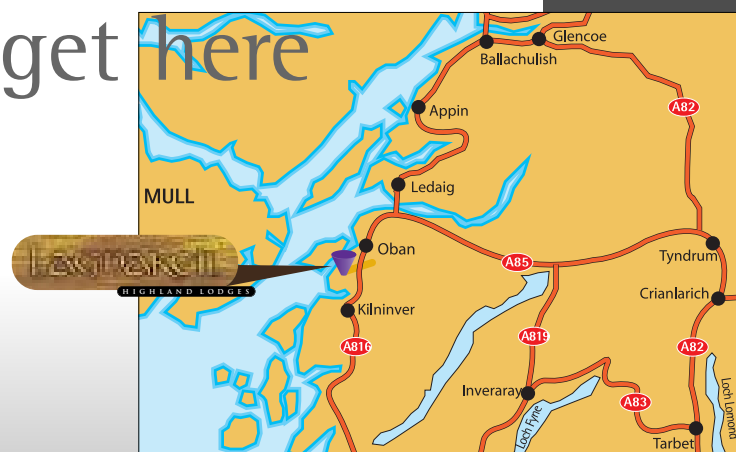
Lagnakeil

HIGHLAND LODGES

how to get here

Travel Tip

From the south on the M6/M74 head for M8 Glasgow south/Eerskin bridge, on M8 head for the A82 Crainlarach going over Erskine bridge then either go Loch lomond side route A82 or Inveraray A819 route to Oban, then finally onto the A85 to Oban

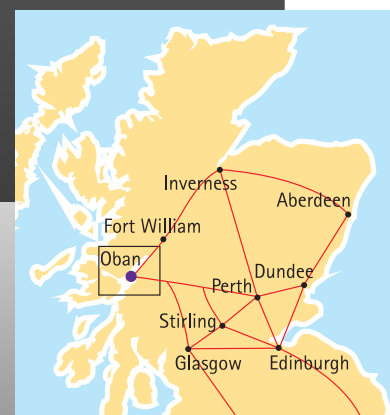


From Oban take the main A816 South - signposted for Lochgilphead and Campbeltown - for 2 miles, turn right on road signposted for Lerags and continue for 1.5 miles to Lagnakeil where you will find us nestled in the hillside overlooking Loch Feochan.

Proprietors: Colin and Jo Mossman: Lagnakeil Lodges, Lerags, Oban, Argyll, PA34 4SE
tel. 01631 562746 fax. 01631 570225
e-mail. info@lagnakeil.co.uk web. www.lagnakeil.co.uk



The Association of Scotland's Self Caterers



THE LODGES

Lagnakeil offers seventeen Lodges in total, and lodges four different styles, each designed to offer modern comforts whilst blending harmoniously into the surrounding countryside.

Every Lodge is self contained and includes a fitted kitchen with electric cooker, microwave, dishwasher, water heater and appliances. All bedrooms are fitted to a high standard with linen and towels provided all bathrooms have a full range of en-suite facilities with showers fitted above bath. The dining/living rooms with colour flat screen T.V. and sky freesat channels are comfortable and ideal for those relaxing moments.

Only a short walk up the glen, a Country Inn can be found serving fine food and ales.

Whichever Lodge you choose you'll discover each has a character of its own - great to come home to after a good day out exploring the area.

the poplar

King size double bedroom sleeping 2

- * Fitted kitchen complete with dishwasher, cooker & microwave
- * Bathroom suites with shower over bath
- * Bed linen & towels supplied and made up for arrival
- * Colour flat screen TV with Sky Free sat channels

the beech

2 bedrooms sleeping 3

- * 1 double and 1 single bedroom
- * Most comfortable 2 adults 1 child
- * Spacious lounge with dining area
- * Fully fitted kitchen no dishwasher
- * Colour TV with Sky Freesat channels

the ash

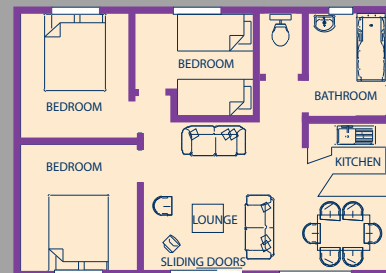
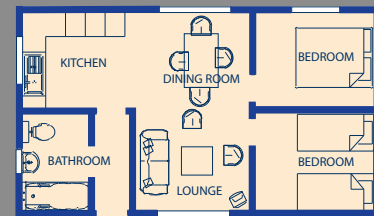
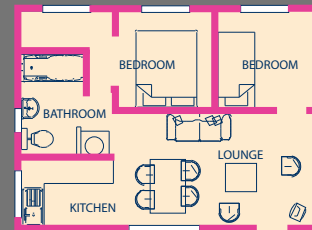
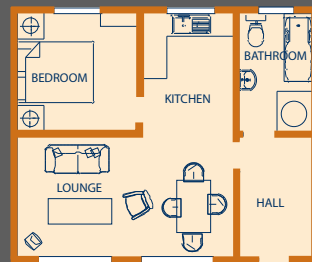
2 bedrooms sleeping 4

- * 1 double and 1 twin
- * Most comfortable 2 adults & 2 children
- * Fully fitted kitchen including dishwasher
- * Bathrooms with power showers

the conifer

3 bedrooms sleeping 6

- * 2 double 1 twin or 2 twin 1 double
- * Most comfortable 4 adults 2 children
- * Fitted kitchens including dishwasher
- * All bedrooms fitted to a high standard made up for arrival inc towels



Layouts shown above are indicative of styles available.

OBAN

Lagnakeil is a perfect location for some hill walking and only three miles from Oban, the unofficial capital of the West Highlands. This picturesque harbour town - with its many attractions and sightseeing opportunities; shopping facilities and fine eating establishments in recognized seafood capitol of scotland- is ideal for those wishing to relax or explore

You could take to the clear waters around Oban and Lorn for sailing, sub-aqua diving, canoeing and sea angling or cruise to the head of Loch Etive for a unique experience. Oban is also known as the "Gateway to the Isles" and beyond the "little bay" are the islands of the Inner Hebrides: Kerrera, Lismore, Mull with the granite mountains of the Morvern peninsula, and beyond them: Coll, Colonsay, Tiree and Iona with regular ferry crossing each day.

However you want to spend your time, you wont be short of choice.

